

LAND CERTIFICATE NO. 49241 COPY

Land Certificate No. 49241 Tulcea

A. Part I. Property description LAND

within the built-up area

Address: Loc. Tulcea, Str PACII, Nr. 2, Bl. P1, Sc. C, Et. PARTER, Ap. 3, Jud. Tulcea

| Item no. | Cadastral number Topographic number | Surface* (sqm) | Observations / References |
|----------|--|----------------|---|
| A1 | 49241 | 4 | Unfenced land; The land is not fenced. Between points 1-4, is the wall of apartment 3. |

B. Part II. Owners and documents

| Entries regarding property rights and other real rights | | References |
|---|---|------------|
| 64886 / 08/07/2021 | | |
| Registered under private signature no. 55, dated 25/02/2021 issued by the Local Council of Tulcea Municipality; Administrative Act no. 9001, dated 22/06/2021 issued by the TOWN HALL OF TULCEA MUNICIPALITY; | | |
| B1 | Tabulation, PROPERTY right, acquired by law, current share 1/1, initial share 1/1 | A1 |
| | 1) TULCEA MUNICIPALITY, CIF(Fiscal Identification Code): 4321429, private domain | |

C. Part III. ENCUMBRANCES.

| Entries regarding dismemberment of property rights, real rights of guarantee and encumbrances | References |
|---|------------|
| NOT EXISTING | |

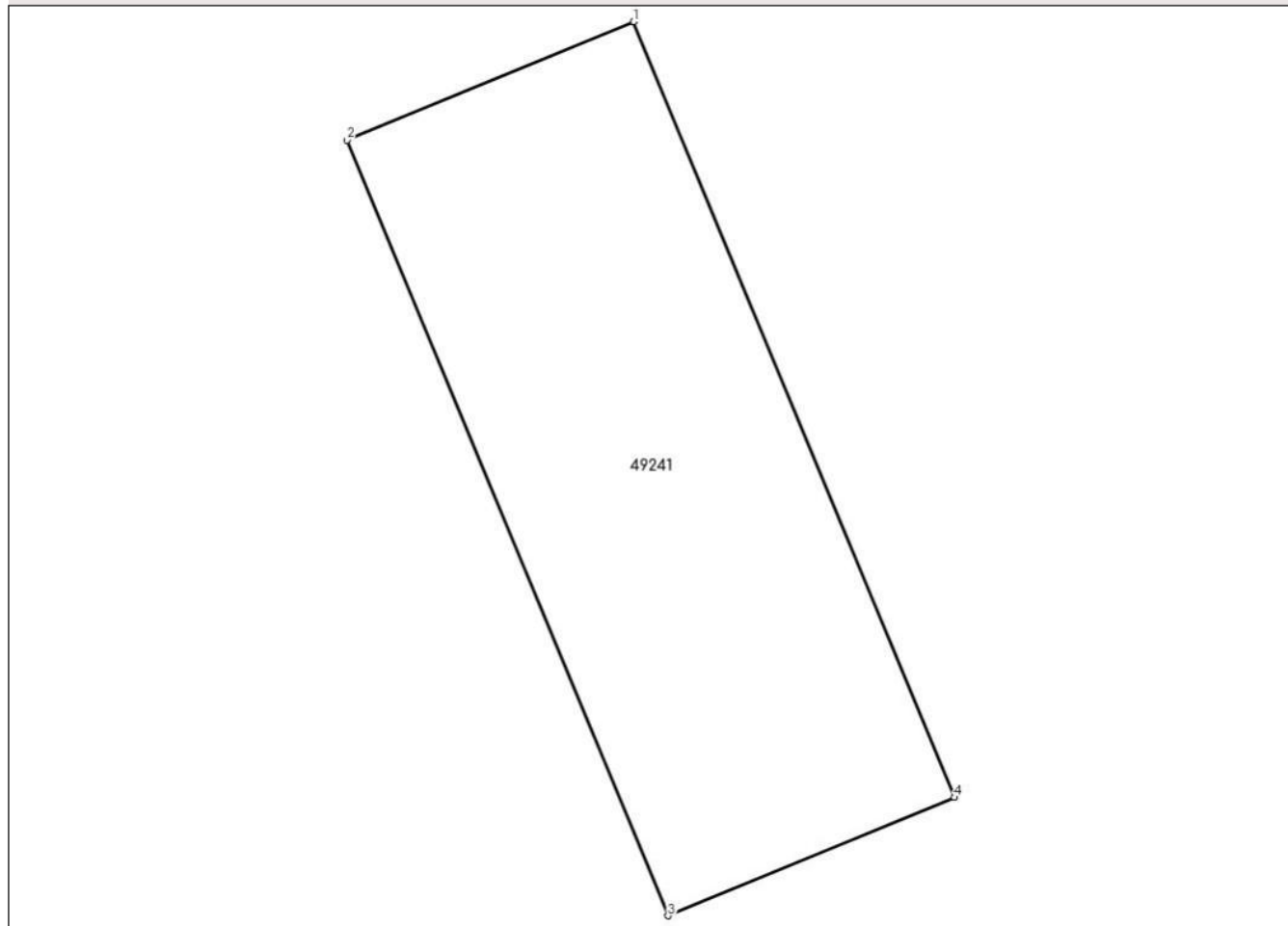
Annex No. 1 To Part I

Land

| Cadastral no. | Surface (sqm)* | Observations / References |
|---------------|----------------|---|
| 49241 | 4 | The land is not fenced. Between points 1-4, is the wall of apartment 3. |

* The surface is determined in the Stereo 70 projection plane.

REAL ESTATE LINEAR DETAILS



Land related data

| Item no. | Usage category | Land within the built-up area | Surface (sqm) | Strip land | Lot | Topographical no. | Observations / References |
|----------|--------------------|-------------------------------|---------------|------------|-----|-------------------|---|
| 1 | construction yards | YES | 4 | - | - | - | The land is not fenced. Between points 1-4, is the wall of apartment 3. |

Segments length

1) The segment length values are obtained from the plan projection.

| Start point | End point | Segment length (** (m) |
|-------------|-----------|------------------------|
| 1 | 2 | 1.2 |
| 2 | 3 | 3.25 |
| 3 | 4 | 1.2 |
| 4 | 1 | 3,251 |

** Segment lengths are determined in the Stereo 70 projection plane and are rounded to 1 millimeter. *** The distance between the points is made up of cumulative segments that are smaller than the value of 1 millimeter.

